



CathexisVision Installation Guide on Ubuntu 20.04

Contents

| | |
|--|----|
| 1. Introduction..... | 3 |
| 2. Installation Requirements | 4 |
| 2.1. Ubuntu Updates | 4 |
| 2.2. Required Software Packages and OS Configuration Changes | 4 |
| 2.3. Recommended Software Packages | 5 |
| 2.4. Install CathexisVision..... | 6 |
| 3. Configuring Alarm Management Gateway..... | 8 |
| 3.1. Create Database | 8 |
| 3.2. Start the PostgreSQL Engine..... | 8 |
| 3.3. Check Status | 8 |
| 3.4 Reboot the Server..... | 8 |
| 4. Converting Server to Failover Hotspare | 9 |
| 4.1. Convert to Hotspare | 9 |
| 4.2. Convert Back to NVR Server | 9 |
| 5. Network Storage..... | 10 |
| 6. Conclusion | 11 |

While Cathexis has made every effort to ensure the accuracy of this document, there is no guarantee of accuracy, neither explicit nor implied. Specifications are subject to change without notice.

1. Introduction

This document details the installation process of the 64-bit CathesisVision software on the Ubuntu 20.04 LTS operating system.

For further information about the CathesisVision software, please consult the *CathesisVision Setup Manual* (<http://cathesisvideo.com/>).

For support, email support@cathesisvideo.com

A NOTE ON CAMERA CHANNELS

The CathesisVision software packages have **limits on camera channels**. A multi-sensor camera is physically a single device (camera) but it **requires a camera channel for each one of the internal cameras**. The same applies to an encoder: a 16-channel encoder will account for 16 camera channels on the CathesisVision software, even though it is a single device. Even when a camera or device only uses a single IP license, the camera channel limit will still apply.

USEFUL LINKS

To view **tutorial videos** on CathesisVision setup, visit <https://cathesisvideo.com/resources/videos>

Find answers to Cathesis **Frequently Asked Questions**: <https://cathesis.crisp.help/en/?1557129162258>

2. Installation Requirements

This section deals with the installation requirements that need to be met in order for CathexisVision to function on the Ubuntu 20.04 operating system.

Note:

1. The Ubuntu image used is **ubuntu-20.04-desktop-amd64.iso (Latest version)**
2. This guide is for the 64-bit CathexisVision software.
3. CathexisVision 2021.1 and higher is required on Ubuntu 20.04

2.1. Ubuntu Updates

After Ubuntu has been installed, perform the Ubuntu updates to install the latest Ubuntu packages, drivers and security updates.

Enter the following terminal commands:

```
# sudo apt-get update  
# sudo apt-get upgrade
```

2.2. Required Software Packages and OS Configuration Changes

Critical Note: These packages need to be installed before installing CathexisVision.

Enter the following commands from an Ubuntu terminal:

2.2.1. HTTP and Mobile Device (iOS/Android) Access.

```
# sudo apt-get install php apache2 libapache2-mod-php
```

2.2.2. SSH Server for Remote Access

```
# sudo apt-get install ssh
```

2.2.3. Emacs File Editor: (Preferred Editor)

```
# sudo apt-get install emacs
```

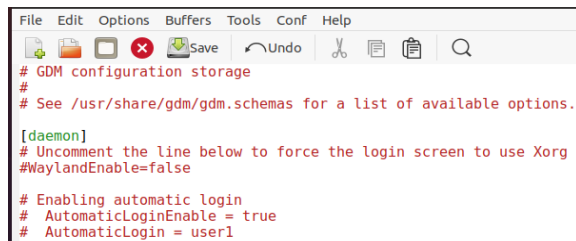
2.2.4. Install Unzip Package

```
# sudo apt-get install unzip
```

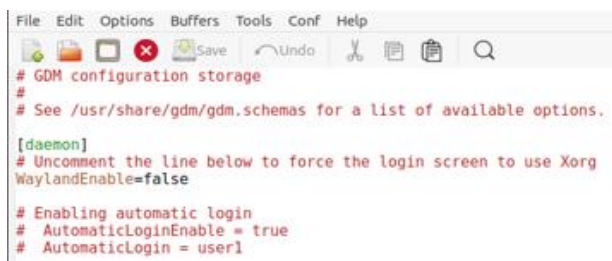
2.2.5.1. Disable Wayland and Make Xorg the Default Display Server

Assuming that GDM3 is the default display manager, edit the `/etc/gdm3/custom.conf` and remove the “#” to disable Wayland:

```
# sudo emacs /etc/gdm3/custom.conf
```



```
File Edit Options Buffers Tools Conf Help
# GDM configuration storage
#
# See /usr/share/gdm/gdm.schemas for a list of available options.
[daemon]
# Uncomment the line below to force the login screen to use Xorg
#WaylandEnable=false
# Enabling automatic login
# AutomaticLoginEnable = true
# AutomaticLogin = user1
```



```
File Edit Options Buffers Tools Conf Help
# GDM configuration storage
#
# See /usr/share/gdm/gdm.schemas for a list of available options.
[daemon]
# Uncomment the line below to force the login screen to use Xorg
WaylandEnable=false
# Enabling automatic login
# AutomaticLoginEnable = true
# AutomaticLogin = user1
```

Press “**Ctrl x and s**” to save the changes, and “**Ctrl x and c**” to exit emacs.

2.2.5.2 Restart GDM3 or Reboot Ubuntu 20.04 Desktop for Changes to Take Effect

```
# sudo systemctl restart gdm3
```

2.3. Recommended Software Packages

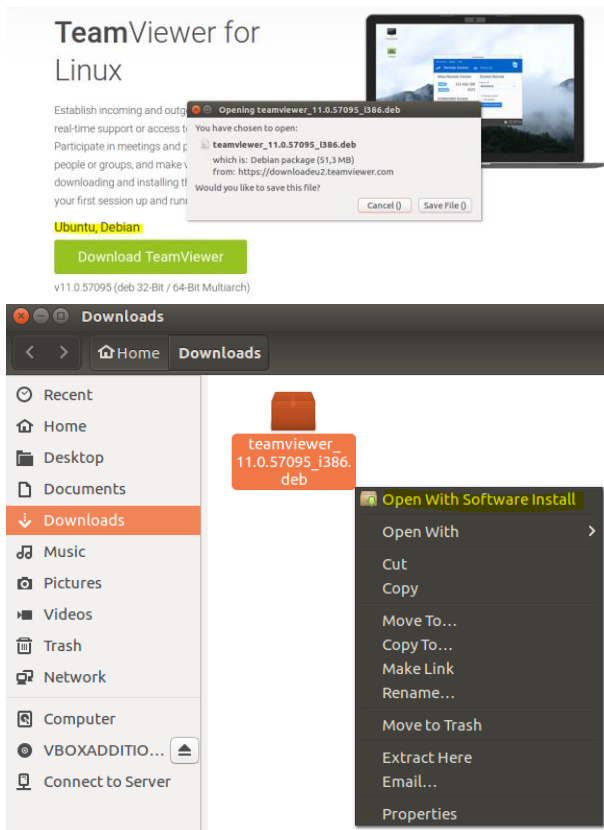
It is recommended that the following software packages are installed.

2.3.1 FileZilla Client

Navigate to the **Ubuntu Software** centre. Search for **FileZilla** and select to install.

2.3.2 TeamViewer

Open desired browser and navigate to <https://www.teamviewer.com/en/download/linux>.



Select the **Ubuntu/Debian** download link.

Using the Ubuntu file manager, navigate to the downloaded file.

Right-click the file and select **Open with Software Install**.

This will install TeamViewer.

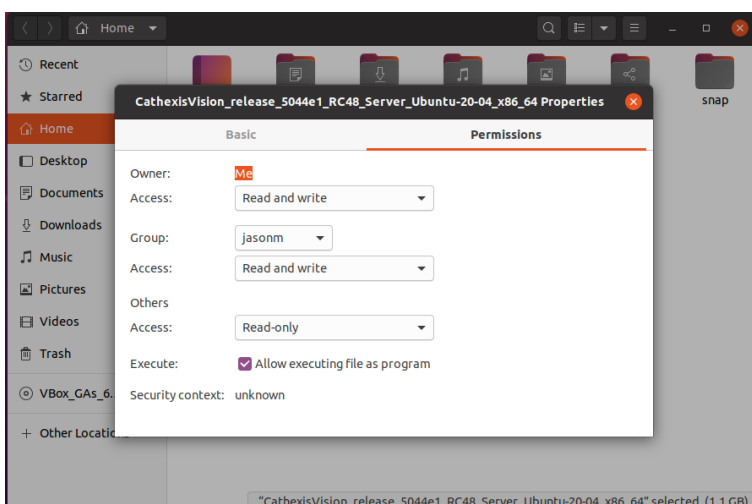
2.3.3 NTP for Time Synchronisation

This package needs to be installed from an Ubuntu Linux terminal.

Enter:

```
# sudo apt-get install ntp
```

2.4. Install CathexisVision



1. Upload the CathexisVision Installation file into the **/home/admin_user** folder.

FileZilla (ftp) or a flash drive can be used to upload the file.

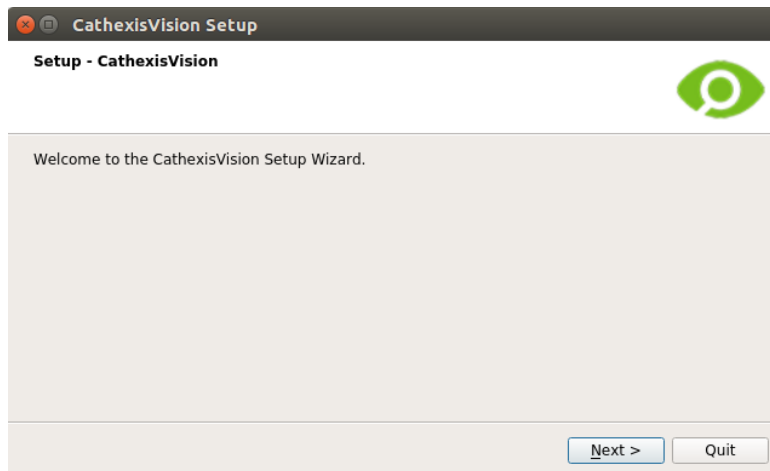
Note: **admin_user** needs to be replaced with the admin user created during the installation.

2. Select the **files icons** from the Ubuntu Taskbar. Navigate the **CathexisVision installation file**.

3. Right-click on the installation file and select **Properties**.
4. Select the Permissions tab and check **Allow executing file as program**.
5. From a terminal window, navigate to the /home/admin_user folder and run the installation:

```
# cd /home/admin_user
# sudo ./CathesisVision_release_2021.1_Server_Ubuntu-20-04_x86_64
```

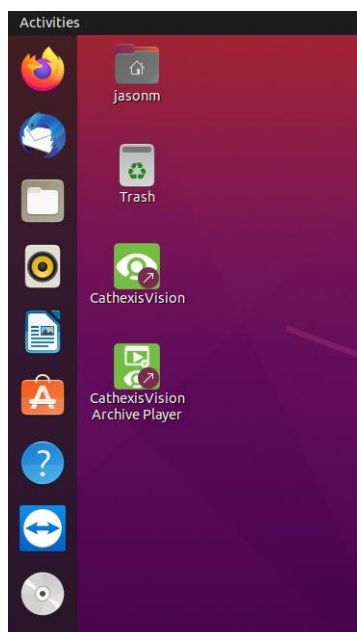
A prompt for the administrator password will appear, and the CathesisVision installation wizard will then run through the installation process:



6. Once the process is complete, reboot the server.

```
# sudo reboot
```

7. New CathesisVision Icons after the reboot:



3. Configuring Alarm Management Gateway

If the server has to be configured as an Alarm Management Gateway (AMG) unit, please follow the instructions below on creating a PostgreSQL database.

Note: An Alarm Management Gateway License is required (**CAMG-1000**).

3.1. Create Database

Enter the following terminal commands:

```
# cd /usr/nvr  
# sudo ./launch.sh bin/gateway_dbutil create /usr/GatewayDB
```

3.2. Start the PostgreSQL Engine

Enter the following terminal command:

```
# sudo ./launch.sh bin/gateway_dbutil start
```

3.3. Check Status

Enter the following terminal command:

```
# sudo ./launch.sh bin/gateway_dbutil status
```

3.4 Reboot the Server

Once the database has been created, restart the server to start and use the PostgreSQL database.

Enter the following terminal command:

```
# sudo reboot
```

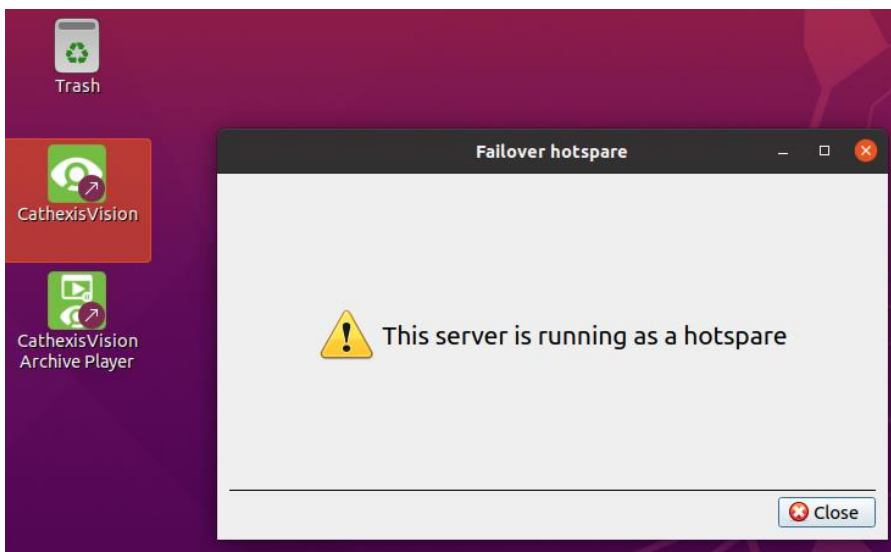

4. Converting Server to Failover Hotspare

4.1. Convert to Hotspare

To change the NVR server into a failover hotspare unit, follow the instructions below.

Enter the following terminal commands:

```
# sudo touch /usr/nvr/failover/data/control/hotspare_enabled  
# sudo reboot
```



After the reboot, the change can be tested by running the CathexisVision shortcut.

If the conversion was successful, the message to the left will appear.

4.2. Convert Back to NVR Server

To convert the failover hotspare unit back to an NVR server, simply remove the **hotspare_enabled** file.

```
# sudo rm /usr/nvr/failover/data/control/hotspare_enabled  
# sudo reboot
```

5. Network Storage

The CathesisVision software can access or utilise network storage. It is not covered in this basic setup guide. Please refer to the Ubuntu website for detailed instructions on how to configure iSCSI or CIFS network storage setup.

Once configured and mounted at start-up, use the CathesisVision database setup to gain access to the storage.

6. Conclusion

Please remember that this document was designed to deal with the installation of CathesisVision on Ubuntu 20.04.

For further information about the CathesisVision software, consult the *CathesisVision Setup Manual* (<http://cathesisvideo.com/>).

For support, contact support@cathesisvideo.com